

**BESPOKE JOINERY**

• M A N U F A C T U R I N G •



# table of contents

01

our company

02

meet our team

03

how we work

04

our services

05

our projects

06

our clients



## our company

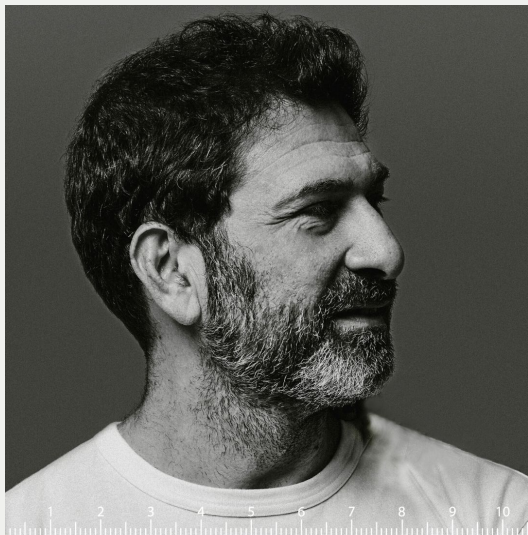
bespoke joinery manufacturing acts as a one stop shop solution for all services related to carpentry, internal fixtures, and furniture fittings. It's main aim is to cater to all who are searching for high-quality products to help fill and elevate their space.

our facility is 850 sqm and is equipped with a production process that ensures quick and efficient delivery. Alongside our steel factory, we are able to internalise the entire production process at our facilities and guarantee a great deal of quality during each stage while placing strong emphasis on attention to detail.





## our team



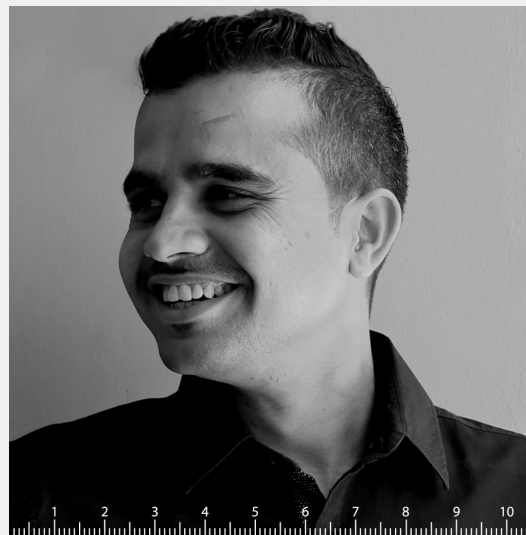
**fadi saredidine**

co-founder & architect



**jamal wick**

co-founder & ceo



**mukesh jangid**

partner & operations manager

# how we work

- in-line with Bespoke Joinery's values of excellence in design and craftsmanship, and client satisfaction, we pride ourselves on taking time to analyse and review designs for accuracy and functionality before the plans are progressed to the manufacturing stage
- throughout the manufacturing process, our joiners work to our high standards and strict quality control is applied.
- joinery is typically assembled in the factory, as it will be at installation, to ensure it fits together perfectly and any potential problems are resolved prior to installation
- there are endless style options when it comes to choosing joinery finishes and we will endeavour to source any product desired by our clients. Bespoke Joinery offers finishes such as 2-pack, hand painting, timber veneers, vinyl wrap, laminate, acrylic, natural stone and engineered stone..

consultation

proposal

design

material  
selection

production

delivery



## our services



interior fit outs



joinery & cabinet making



customized furniture



installation & events

projects

01

# hive coliv

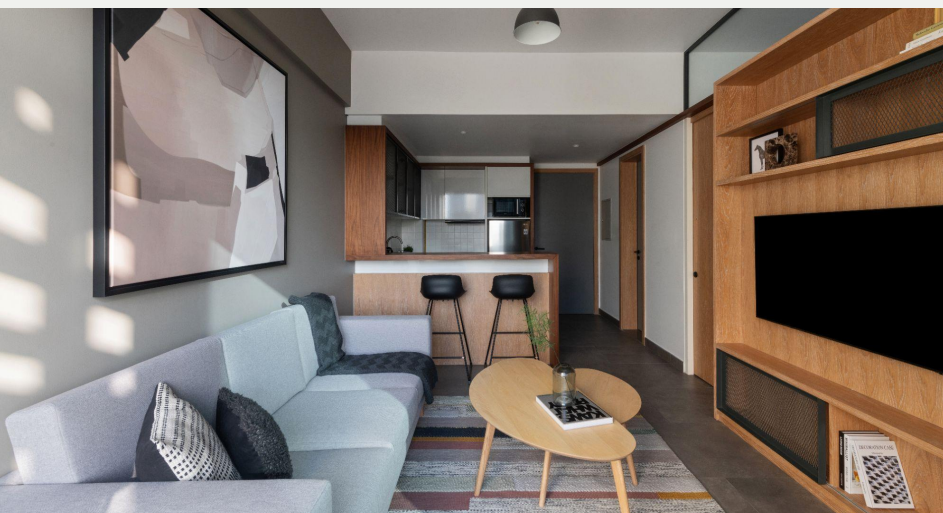
designed in its entirety – from the architecture and interior design to furniture and custom solutions – by Lebanese designer Fadi Saredine (co-founder & architect at Bespoke Joinery) the entire project, in its architecture, interior and furniture, played a balanced role to respond to the brief which we had formulated with Hive Coliv; which was to create a place that is elegant yet simple, rich yet unimimidating.







hive coliv







projects

02

# tahini

a creation by Grit Hospitality unveils a stunning design by Architect Fadi Sarieddine. Blending Levantine tradition with modern elegance, the interiors feature crafted joinery from our sister company, Bespoke Joinery Manufacturing, ensuring a bespoke dining experience. Inspired by Lebanon, Tahini boasts curving arches, green-patterned window frames, and an open-hearth kitchen, preserving cultural food traditions. It's a culinary haven where artistry meets authenticity.











projects

# 03 ykone house

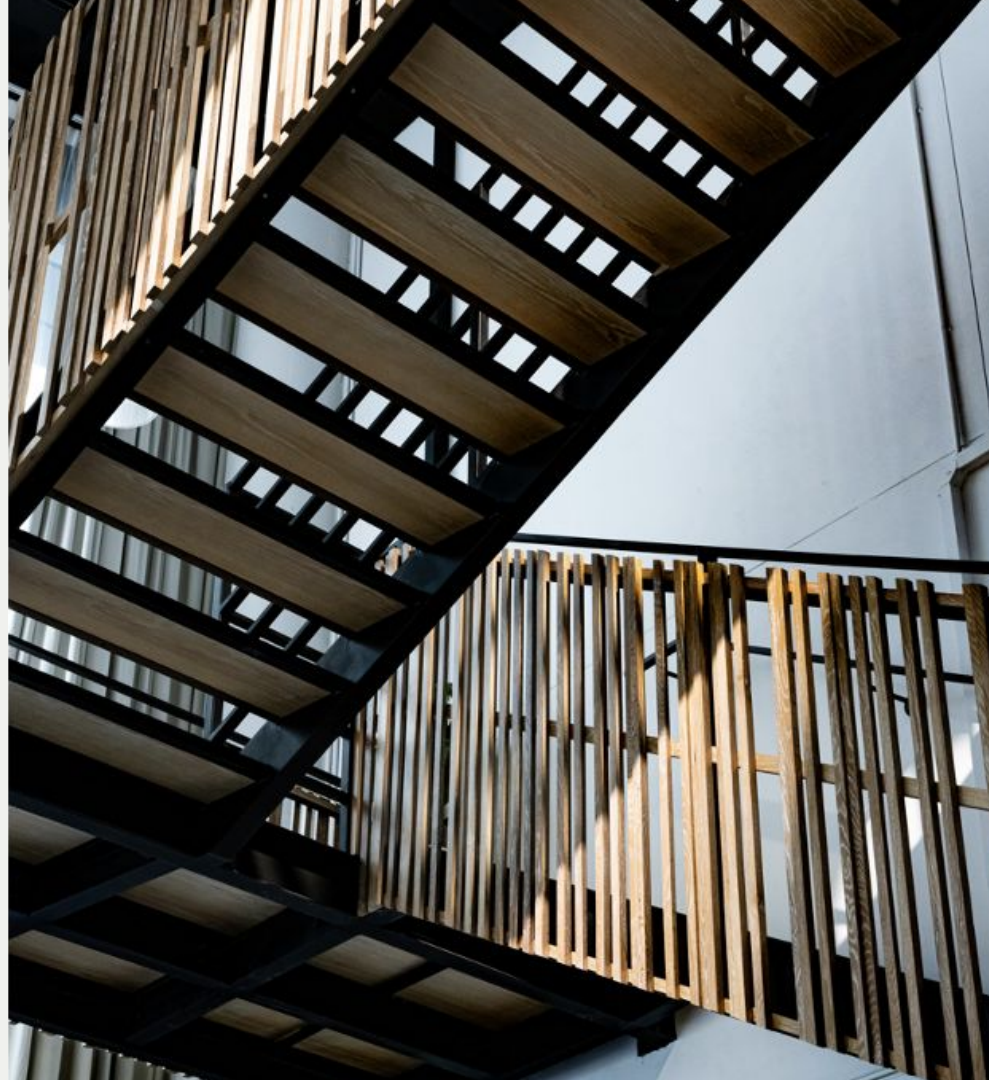
designed by Lebanese architect Fadi Saredine, the multifunctional mixed-use retail space was a project unlike any other. Fadi said, "Ykone space was a unique project as it marries the functions of a working space, a studio space and a café area for complimentary coffee. I have designed the space that celebrates all three functions while allowing them to interact visually and spatially. The main feature, the timber slat clad staircase, aims at stitching the mezzanine with the ground floor with its continuity to become a functional wall on the mezzanine."











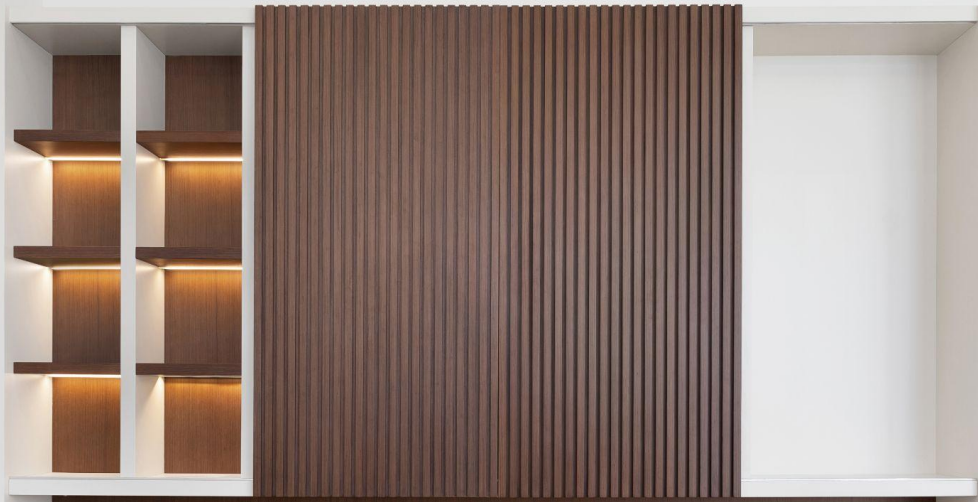
projects

04

# palma residence

epitomizes the pinnacle of residential refinement. This Villa Refurbishment highlights the meticulous expertise of our dedicated team. With contemporary bathrooms seamlessly merging form and function to provide a rejuvenating sanctuary, an attention-grabbing staircase at the entrance, and versatile multi-functional cabinets, this project exemplifies our commitment to crafting homes where timeless elegance meets modern luxury, redefining the essence of sophisticated living.









projects

05

## shurooq investment

in 2021 Shurooq Investment launched a new project in collaboration with our parent company Bespoke Modular Solutions. To create a new line of hospitality trailers where people have the opportunity to experience a unique tourism project in the region, which promises offbeat adventures and round-the-year safe holidaying in the comfort of a mobile home. The materials used to build the trailer have been carefully selected because of their environmentally friendly facets ensuring that they impact the environment as minimum as possible.



shurooq investment





shurooq investment



shurooq investment













projects

06

## private office

we partnered in designing an office envisioned by World of Art. Under the guidance of our sister company, Bespoke Joinery Manufacturing, we took charge of the entire joinery process throughout the office space. Our goal was to create a workspace that seamlessly blends comfort and creativity while ensuring consistency across all offices. Our scope of work was to craft custom desks, shelving units, ceiling designs, partitions, and other personalized elements, resulting in a uniquely designed and harmonious office environment.





private office





private office





private office



projects

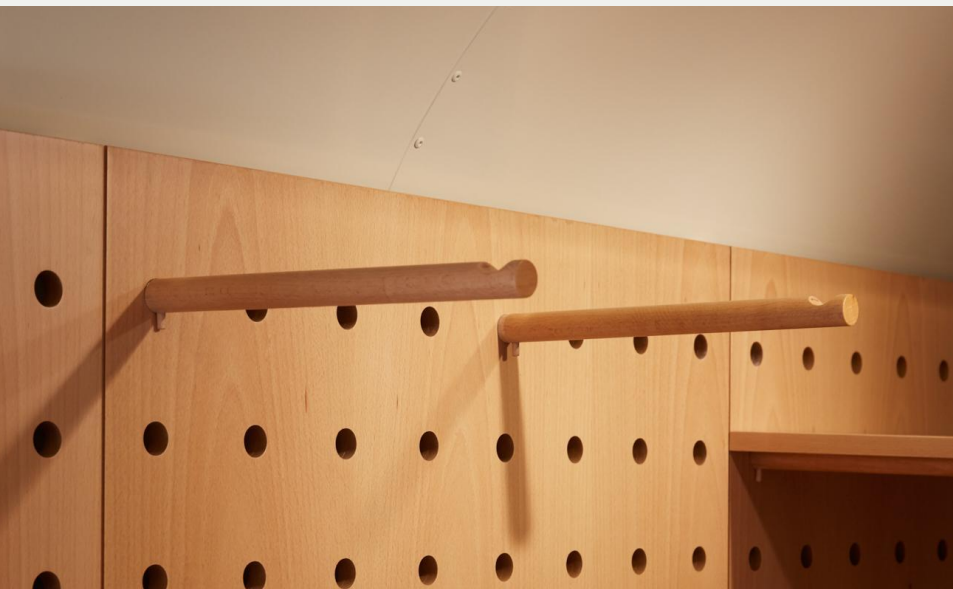
# 07 lululemon

was approached by our sister company, Bespoke Trailers, to build one of its kind retail trailer. Our scope of work was to design and build the same. Bespoke Joinery scope of works was to complete the full fit out works, from the flooring to the fitting rooms, peg boards, storage, cabinets... every single piece was done customized and particularly for this project,











projects

08

## brunch & cake

with five outlets across the UAE, Brunch and Cake have enlisted our expertise to create custom joinery pieces aimed at cultivating a warm, inviting, and sophisticated atmosphere. Our scope of work encompasses crafting bespoke chairs, tables, and other elements to ensure that customers feel truly at home in each unique space.



brunch & cake





brunch & cake





brunch & cake



projects

# 09

## canary club

drawing inspiration from the iconic style and flavors of West Coast havens, Canary Club seamlessly blends distinctive elements in its design. A tribute to a bygone era, the restaurant's ambiance is carefully curated. Our scope of work was to create custom joinery items that effortlessly synchronize with the West Coast-inspired aesthetics, contributing to a cohesive and welcoming atmosphere across the entire space.





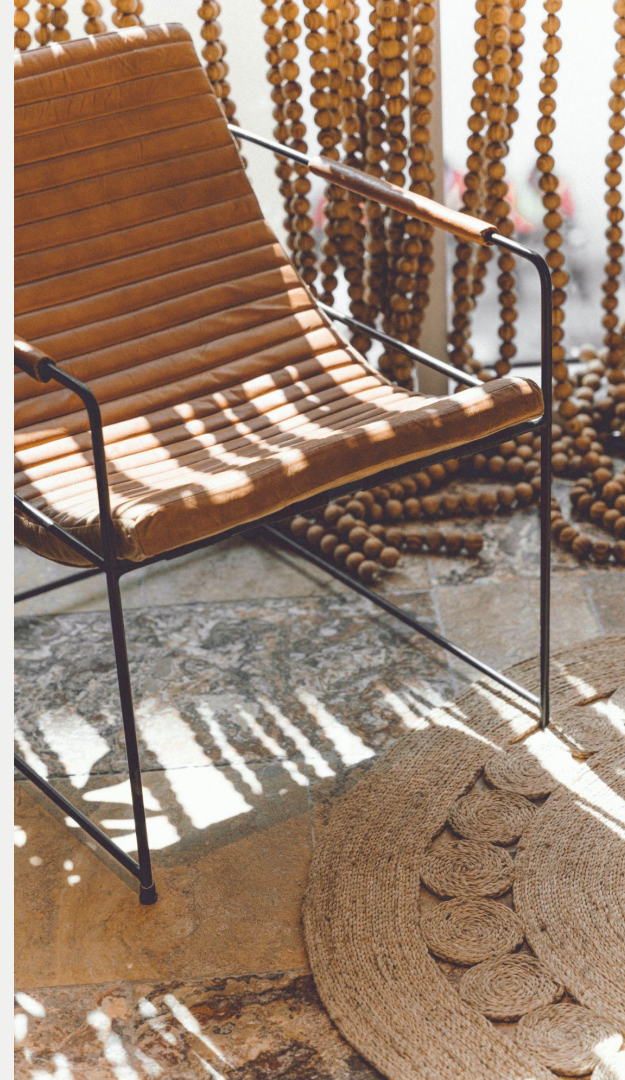






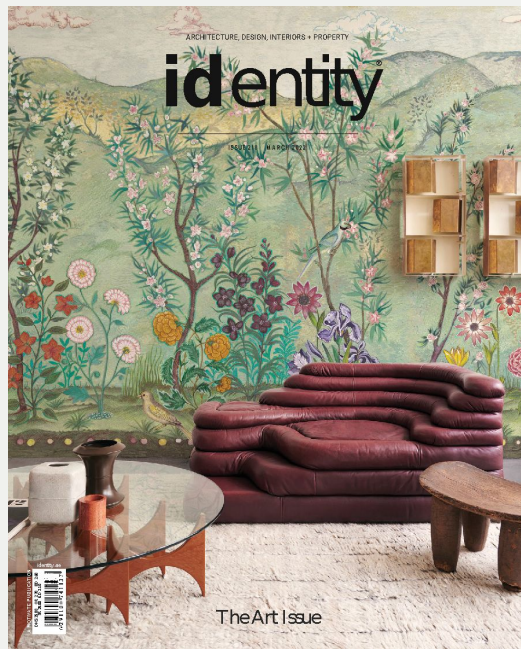


canary club





media



identity

## Community living

HIVE COLBY opens its first property in Dubai, filling a gap in the market for contemporary community living

WORDS BY ADAM HARRISON  
A ORIGINALITY PUBLISHING COMPANY

"The concept for HIVE COLBY was born out of a personal frustration with the lack of contemporary housing options available for younger generations in Dubai," begins Hani Achmed, the lead creative entrepreneur behind the city's new urban living concept that aims to remove the typical barriers of renting or a space as a mere shelter, having personally experienced a gap in the market for professional working adults and community-driven homes. "Achievers set out to develop a different kind of model 'specifically tailored towards modern consumers who desire a more flexible, convenient and socially connected way of living'."

Informed by the development and management of 'live living' communities, HIVE COLBY teamed up with private real estate investment firm A.R.M. Holding, who backed Achmed's ambitions which fell in line with its own aim of supporting pioneering projects both locally and regionally as well as globally. The UAE-based investment firm is also equally committed to supporting a community-led residential sector in the country. "The launch of HIVE COLBY is an exciting step toward the new era of sustainable living for the benefit of young professionals who call the UAE home," says Mohammad Al-Jabir, CEO of A.R.M. Holding.

The first property to open under HIVE COLBY is HIVE JVC, located in Jumeirah Village Circle, and designed in its entirety - from the architecture and interior design to furniture and exterior solutions - by Lebanese designer Fadi Saadeh. "The entire project, as its certificate, interior and furniture played a balanced role to respond to the brief which we had formulated with HIVE COLBY which was to create a place that is intelligent, simple, rich yet unassuming. Sustainable concepts."

THIS ART 2023 11

## ARCHITECT

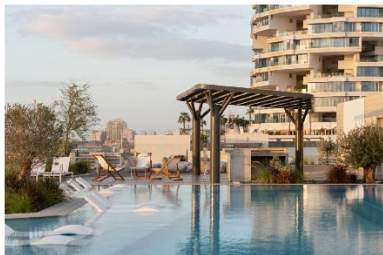
PEOPLE

### Fadi Sareddine talks about building the first co-living space in Dubai

HIVE Coliv launched its first coliving space in the region with HIVE JVC.

by Saha Sabith February 22, 2022

SHARE



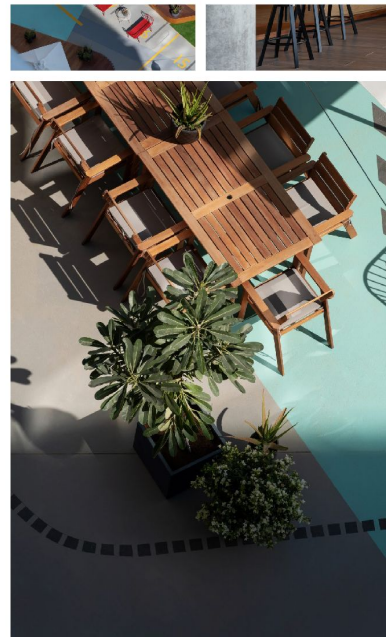
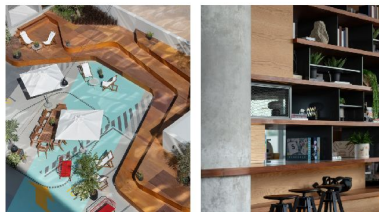
HIVE Coliv in JVC, Dubai. Image by Natelee Cocks

Located in Jumeirah Village Circle, HIVE JVC offers a co-living space with furnished apartments, shared facilities, and more. The project was brought to life by A.R.M Holding, a

private multi-sector investment firm that supports projects locally, and globally.

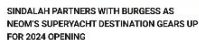
Designed by Dubai-based architect **Fadi Sareddine**, HIVE Coliv's modern plug and play apartments range in size from studio to four-bedroom, and feature interiors with contemporary European fixtures.

Middle East Architect spoke with the architect behind the project to know more about what makes co-living spaces different from traditional houses and what's the attraction behind them?



## GRIT HOSPITALITY INTRODUCES DUBAI TO LATEST F&B CONCEPT, TAHINI

in F&B Hospitality Insights, Lifestyle & Leisure News, Restaurant, Restaurant News



BY HEINKE DIGITAL EDITOR © NOVEMBER 20, 2022



Open daily from 8:00 am until 4:00 pm



EX-MONNE DIGITAL EDITOR © NOVEMBER 29, 2023







campaign Middle East



FEATURED | MEDIA | NEWS

posted on Jan. 19, 2022 at 1:28 pm

## Ykone Agency opens fully integrated influencer marketing hub in the Middle East

Sofia Serrano

YKONE announces the opening of a creative hub in Dubai – inclusive of a creative studio, coworking café, connected meeting rooms, and amphitheatre to welcome creatives from the region and beyond.






TIMBER SLAT-CLADDED STAIRCASE AT YKONE HOUSE

Designed by Lebanese architect Fadi Saredidine, the multifunctional mixed-use retail space was a project unlike any other. Fadi said, “Ykone space was a unique project as it marries the functions of a working space, a studio space and a café area for complimentary coffee. I have designed the space that celebrates all three functions while allowing them to interact visually and spatially. The main feature, the timber slat clad staircase, aims at stitching the mezzanine with the ground floor with its continuity to become a functional wall on the mezzanine.”

## our clients



هيئة الشارقة  
للاستثمار والتطوير  
SHARJAH INVESTMENT AND  
DEVELOPMENT AUTHORITY



I IIVE

Canary Club

Ykone



lululemon

tahini  
LEVANTINE INSPIRED

# contact us

telephone: +971 50 362 2872

email: **[info@bespokejoinery.ae](mailto:info@bespokejoinery.ae)**

location: warehouse #12,  
arena compound,  
al quoz, dubai, uae

